

HARRINGTON

COLLEGE OF DESIGN

OPEN ACCESSIBILITY

Ed Kucic and Kristen Penfold

Design I:

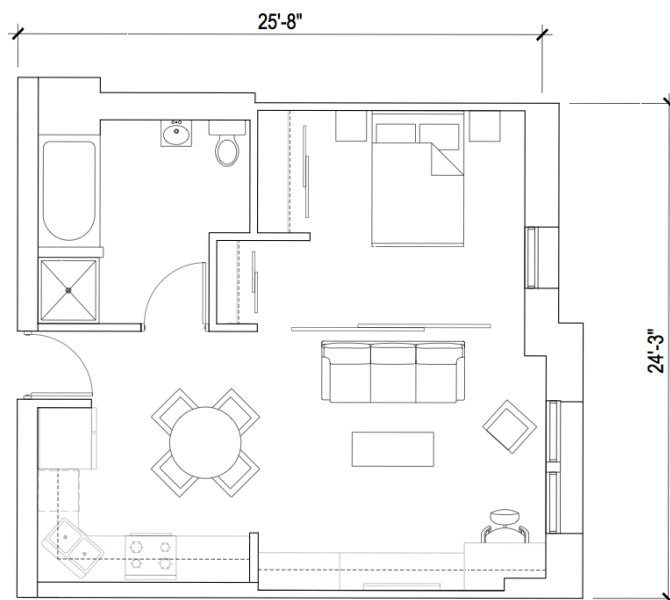
After studying some examples of assisted living apartments and building amenities, I found that they look too institutional. Discarding the personal effects of the resident, the rooms lack character and design substance. In my design I want the room to look like it is a home, not a place where people live temporarily and the owners are already concerned about the next resident. This design does address the issue of multiple users with the use of simple built-ins leaving the customization to the residents' personal taste with regard to paint color, seating, tables, and personal effect display. In addition, simple design is ideal for duplication in large multi-floor, multi-unit facilities.

In an assisted living facility, accessibility is a big part of the design. My design provides this **accessibility, but in a non-obtrusive almost hidden fashion**. Using built-ins, sliding doors, and optimal spacing of the furniture, ease of access is created so that a person using a wheelchair, cane, or crutches can easily circulate throughout the room without interference.

Seeing that this is a rather small space, the layout of the room is quite simple. As you enter the unit, the bathroom is to the left. The bathroom is ADA compliant and provides a shower and tub for use depending on the condition of the resident. On the right is the kitchen, which is open to the living room. The kitchen has all normal amenities and room for a small table and chairs. The kitchen opens to the living area, which is adjacent to a large picture window providing ample light. On the right wall is a built in unit providing shelves, cabinets, and a small desk area. The living area is connected to the sleeping area, but separated by four sliding panels that can be completely open, closed or partially open, closed. The sleeping area has room for a queen-sized bed, two nightstands, closets.

placement access on bed.

The design is an the resident unit as if he nicely



also has two Optimal bed would allow for either side of the

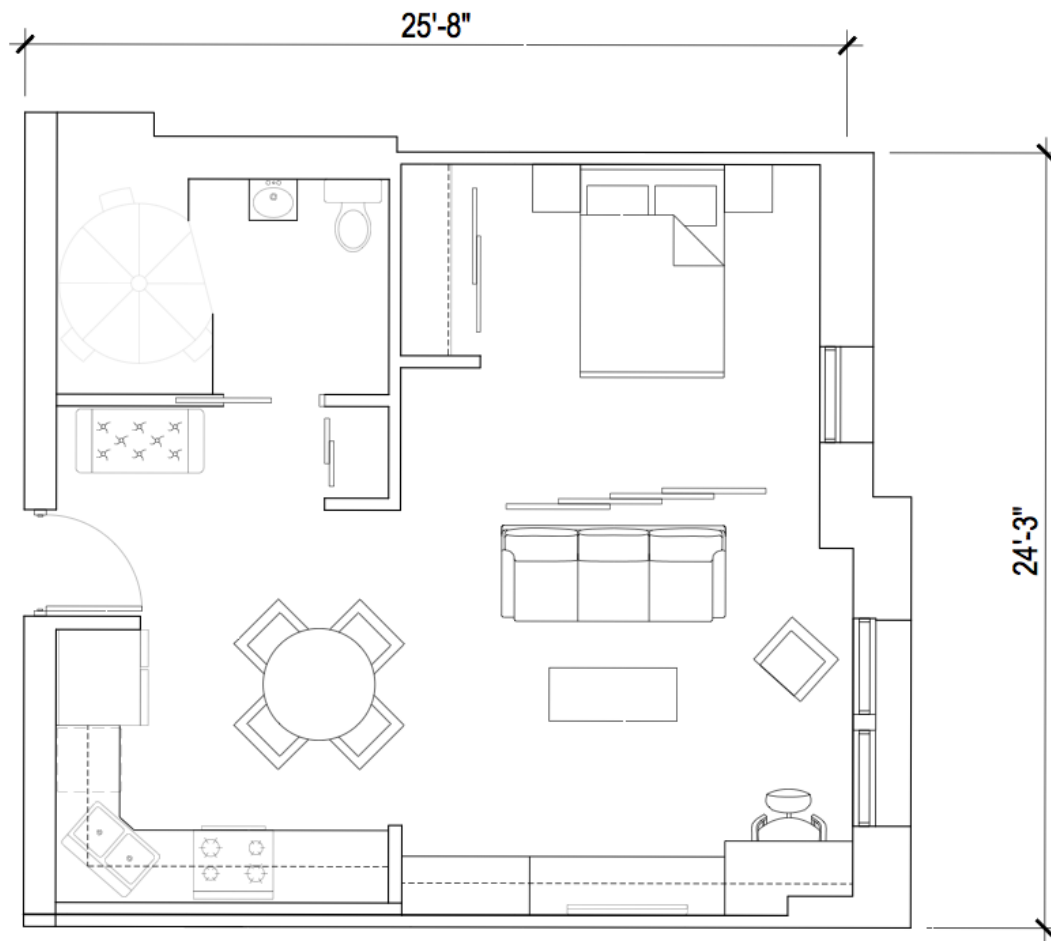
result of my opportunity for to experience the or she is living in a appointed condo

When one first enters the apartment there is a bench with storage underneath, along with storage and hooks above. This area is used to take off or put on shoes, hang coats, and **maintain things visible**; as with many of us, out of sight is out of mind. There is also an entry closet to store other belongings that do not need to be readily accessible.

The bathroom came from design II; it uses the circular walk-in shower combined with the rest of the bathroom to create a **European bathroom system** that still has a rather enclosed feel. It features a pocket door entry so as to slide completely out of the way and not take up excess space in the room, yet still provide privacy.

The bedroom includes a closet with sliding doors as well as built-in cabinetry with drawers around the bed, down lighting for reading in bed, and a shelf for personal effects. Across from the bedroom, dividing the bedroom and the living room are four **sliding partition doors** that can completely enclose the bedroom and separate it from the living room, or can be slid out of the way to create on larger room for entertaining.

More built-in cabinets, including a desk, shelving for personal belongings and a TV stand are situated on the living room wall. The desk can accommodate paperwork, a computer, or offer a place for grandchildren and guests to utilize. In the living room there is a **Murphy sleeper** with storage, and a coffee table, side table, and chairs so that guests can comfortably spend the night.



The living room and bedroom are carpeted using a somewhat plush carpet, but yet firm enough to wheel a wheelchair or walker across. The kitchen flooring is a wood-textured, colored laminate, and we utilized a header and wall to signify the change in flooring from the kitchen to living room. Tile covers the entire bathroom; there is a neutral along with bright orange and a deeper red for accent tiles.



In general, our open layout with varying uses lends itself to accessibility and to entertaining many different types of guests. Our goal was to create an intimate space that would feel more like home than senior living, which was mainly accomplished by all the spaces to display and store objects that have been collected over a lifetime.